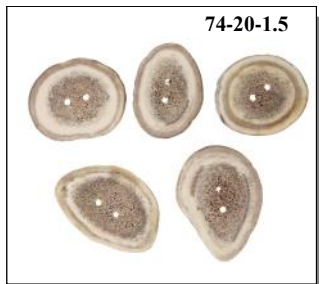


3080-1 Antler Buttons

CROSS-CUT 2-HOLE CARIBOU ANTLER BUTTONS



74-20-LB



74-20-1.5

These buttons are made from antler harvested in Alaska. They are called cross-cut because they are cut in slices perpendicular to the length of the antler. The size ranges are approximate. We measure along the line running through both holes. We also offer assorted sizes by the pound. Each pound has 200 to 400 buttons depending upon mix of sizes. We do not sort the poundage buttons. They come in random sizes and may be bought in 1/4 pound increments. (*C. Rangifer tarandus*).

Made in the USA

Code	Description	Price
74-20-0.5	Cross-Cut 2-Hole Caribou Button:0.5"-1.0"	\$1.64
74-20-1.0	Cross-Cut 2-Hole Caribou Button:1.0"-1.5"	\$1.97
74-20-1.5	Cross-Cut 2-Hole Caribou Button:1.5"-2.0"	\$2.29
74-20-2.0	Cross-Cut 2-Hole Caribou Button:2.0"-2.5"	\$3.60
74-20-LB	Cross-Cut 2-Hole Caribou Buttons:Assorted Sizes	\$242.31 / lb

CARIBOU ANTLER BARREL BUTTONS



74-20-BAR

The barrel buttons (also called toggle buttons or toggles) are cut from antler tips and then smoothed on the ends. The regular barrel buttons come with two holes. The blind buttons (not shown) have a hole in the back that cannot be seen from the front. (*C. Rangifer tarandus, wild*).

Made in the USA

Code	Description	Price
74-20-BAR	Caribou Antler Button:Barrel	\$5.24
74-20-BBH	Caribou Antler Button:Barrel:Blind	\$8.52

PALM-CUT MOOSE ANTLER BUTTONS

Made from antler harvested in Alaska, the buttons are die cut from the palm and have the beautiful brown coloring of the outside of the moose antler. We do not make these smaller than 1.5" or larger than 3" due to difficulty working the antler. (*Alces alces, wild*).

Made in the USA

Code	Description	Price
38-P2-2.0	2.0" Palm-Cut 2-Hole Moose Button	\$16.52
38-P2-2.5	2.5" Palm-Cut 2-Hole Moose Button	\$19.65
38-P2-3.0	3.0" Palm-Cut 2-Hole Moose Button	\$23.08
38-PB-2.5	2.5" Palm-Cut Blind-Hole Moose Button	\$21.02
38-PB-3.0	3.0" Palm-Cut Blind-Hole Moose Button	\$24.89

Code	Description	Price
38-R-0.5	Cross-Cut 2-Hole Moose Button:0.5" to 1.0"	\$1.76
38-R-1.0	Cross-Cut 2-Hole Moose Button:1.0" to 1.5"	\$2.95
38-R-1.5	Cross-Cut 2-Hole Moose Button:1.5" to 2.0"	\$3.60
38-R-2.0	Cross-Cut 2-Hole Moose Button:2.0" to 2.5"	\$5.19
38-R-2.5	Cross-Cut 2-Hole Moose Button:2.5" to 3.0"	\$5.90
38-RB-1.0	Cross-Cut Blind-Hole Moose Button:1.0" to 1.5"	\$13.76
38-RB-1.5	Cross-Cut Blind-Hole Moose Button:1.5" to 2.0"	\$15.07
38-RB-2.0	Cross-Cut Blind-Hole Moose Button:2.0" to 2.5"	\$17.35
38-RB-2.5	Cross-Cut Blind-Hole Moose Button:2.5" to 3.0"	\$20.63

CARIBOU ANTLER TIP BUTTONS



74-20-TIP



74-20-TBH

The caribou tip buttons have been smoothed on one end and then polished. The regular tip buttons come with two holes. The blind buttons have a hole in the back that cannot be seen from the front. (*C. Rangifer tarandus, wild*). Made in the USA

Code	Description	Price
74-20-TIP	Caribou Button:Polished Tip	\$5.24
74-20-TBH	Caribou Button:Tip:Blind	\$8.52



38-P2-2.0



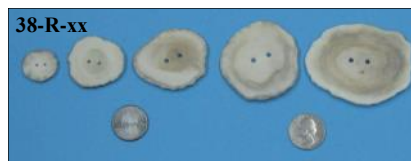
38-P2-2.0



38-PB-2.5 Left: Front / Right: Back

CROSS-CUT MOOSE ANTLER BUTTONS

Made from antler harvested in Alaska, these two-hole buttons are cross-cut and the size is determined by the diameter of the button as measured across both holes. The blind-hole buttons are cross-cut, highly polished, and tend to be thicker than the regular cross-cut buttons to allow for the blind hole. (*Alces alces,wild*).



38-R-xx



38-RB-xx

Made in the USA

3080-2 Shell Buttons

Front



495-xxxL

Back



495-xxxL

495-H40L



The Australian abalone shell heart shape buttons have two holes. (*Haliotis rubra, ranch*).

Made in China from Australian Shells

AUSTRALIAN ABALONE SHELL BUTTONS

The Australian abalone shell buttons are made from brown lip abalone shell. They are smooth on the front, but have an old-fashioned style roughness on the back of the shell, which is great for traditional crafts. The shells are a by-product of the food industry. (*Haliotis rubra, ranch*).

Made in China or South Korea from Australian Shells

Code	Description	Size	1-23	24-99	100+
495-10L	Australian Abalone Button:10-Line	0.25"	\$ 1.64	\$ 0.26	\$ 0.20
495-16L	Australian Abalone Button:16-Line	0.40"	\$ 1.64	\$ 0.27	\$ 0.22
495-18L	Australian Abalone Button:18-Line	0.45"	\$ 1.64	\$ 0.29	\$ 0.24
495-20L	Australian Abalone Button:20-Line	0.50"	\$ 1.64	\$ 0.33	\$ 0.26
495-24L	Australian Abalone Button:24-Line	0.60"	\$ 1.64	\$ 0.38	\$ 0.32
495-28L	Australian Abalone Button:28-Line	0.70"	\$ 1.64	\$ 0.48	\$ 0.35
495-30L	Australian Abalone Button:30-Line	0.75"	\$ 1.64	\$ 0.66	\$ 0.46
495-36L	Australian Abalone Button:36-Line	0.90"	\$ 1.64	\$ 0.88	\$ 0.70
495-40L	Australian Abalone Button:40-Line	1.00"	\$ 2.97	\$ 2.29	\$ 1.83
495-60L	Australian Abalone Button:60-Line	1.50"	\$ 9.77	\$ 7.51	\$ 6.01
495-80L	Australian Abalone Button:80-Line	2.00"	\$18.36	\$14.12	\$11.30
495-100L	Australian Abalone Button:100-Line	2.50"	\$23.69	\$18.22	\$14.57
495-120L	Australian Abalone Button:120-Line	3.00"	\$43.10	\$33.16	\$26.52
495-H40L	Australian Abalone Heart Button:40-Line	1.00"	\$ 8.30	\$ 6.38	\$ 5.10

AFRICAN ABALONE SHELL BUTTONS

495AF-2.80



The Abalone Shell Buttons are made from midas abalone shells and are about 1/16" thick. (*Haliotis midae, ranch*).

Made in South Africa from South African Shells

Code	Description	1-23	24-99	100+
495AF-0.50	African Abalone Shell Button: 12.5mm	\$0.42	\$0.35	\$0.29
495AF-0.78	African Abalone Shell Button: 20.0mm	\$0.51	\$0.44	\$0.37
495AF-1.00	African Abalone Shell Button: 25.0mm	\$0.74	\$0.62	\$0.53
495AF-1.50	African Abalone Shell Button: 38.0mm	\$0.98	\$0.83	\$0.70
495AF-2.00	African Abalone Shell Button: 50.0mm	\$1.20	\$1.02	\$0.85
495AF-2.36	African Abalone Shell Button: 60.0mm	\$1.71	\$1.46	\$1.23
495AF-2.80	African Abalone Shell Button: 71.0mm	\$2.42	\$2.04	\$1.71

CLAM SHELL BUTTONS

491-H-xx



The fresh water clam shell heart shape buttons have two holes. (*Hyriopsis schlegeli, ranch*).

Made in Vietnam

The round Fresh Water Clam Shell Buttons have two holes and various degrees of curvature. They are the same buttons as those used on the Coyote Wall hangings and on the Breast Plates. (*Hyriopsis schlegeli, ranch*).

Made in China

491-xx



Code	Description	1-23	23-99	100+
491-H-1.5	Clam Shell Heart Button:1.5"	\$3.60	\$2.95	\$2.42
491-H-2.0	Clam Shell Heart Button:2.0"	\$4.91	\$4.25	\$3.60
491-0.9	Clam Shell Button:0.9"	\$2.56	\$1.97	\$1.64
491-1.0	Clam Shell Button:1.0"	\$2.56	\$1.97	\$1.64
491-1.1	Clam Shell Button:1.1"	\$2.56	\$1.97	\$1.64
491-1.5	Clam Shell Button:1.5"	\$2.95	\$2.29	\$1.97
491-2.0	Clam Shell Button:2.0"	\$6.23	\$5.57	\$4.91
491-2.5	Clam Shell Button:2.5"	\$7.09	\$6.37	\$5.93

COCONUT SHELL BUTTONS

382-36L



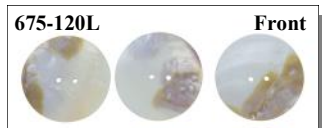
These buttons are made from coconut shells. They have two holes. (*Cocos nucifera, ranch*).

Made in The Philippines

Code	Description	Size	1-23	24+
382-36L	Coconut Shell Button:36L	0.902"	\$1.64	\$0.70

3080-3 Shell Buttons

FRESH WATER MOTHER OF PEARL SHELL BUTTONS



Front



Back

Code	Description	Size	1-23	24-99	100+
675-18L	Fresh water MOP Button:18L	0.457"	\$ 1.64	\$ 0.48	\$0.34
675-24L	Fresh water MOP Button:24L	0.590"	\$ 1.64	\$ 0.55	\$0.42
675-28L	Fresh water MOP Button:28L	0.701"	\$ 1.64	\$ 0.70	\$0.48
675-32L	Fresh water MOP Button:32L	0.807"	\$ 1.64	\$ 1.03	\$0.70
675-60L	Fresh water MOP Button:60L	1.5"	\$ 4.13	\$ 3.10	\$2.08
675-80L	Fresh water MOP Button:80L	2.0"	\$ 4.82	\$ 3.64	\$2.40
675-100L	Fresh water MOP Button:100L	2.5"	\$ 5.50	\$ 4.13	\$2.75
675-120L	Fresh water MOP Button:120L	3.0"	\$ 8.25	\$ 6.21	\$4.13
675-140L	Fresh water MOP Button:140L	3.5"	\$11.00	\$ 8.25	\$5.50
675-160L	Fresh water MOP Button:160L	4.0"	\$17.87	\$13.42	\$8.95

The Fresh Water Mother of Pearl Shell Buttons have two holes. (*Hyriopsis cumingii, ranch*).

18L to 32L buttons are Made in South Korea from Chinese Shells

60L to 160L buttons are Made in China from Chinese Shells

SALT WATER (AKOYA) MOTHER OF PEARL SHELL BUTTONS



Front



Back

The Akoya Salt Water Mother of Pearl Shell Buttons have two holes. They are sometimes referred to as Agoya shell buttons. (*Pinctada fucata, ranch*).

Code	Description	Size	1-23	1-24	100+
384-24L	Akoya MOP Button:24L	0.590"	\$1.64	\$0.55	\$0.42
384-28L	Akoya MOP Button:28L	0.701"	\$1.64	\$0.70	\$0.48
384-30L	Akoya MOP Button:30L	0.748"	\$1.64	\$0.76	\$0.61
384-32L	Akoya MOP Button:32L	0.807"	\$1.64	\$1.03	\$0.70
384-36L	Akoya MOP Button:36L	0.902"	\$1.72	\$1.25	\$0.88

Made in South Korea from Chinese Shells

BROWN MOTHER OF PEARL SHELL BUTTONS



Front



Back

These buttons are made from brown mother of pearl shells. They have two holes. The front and back is shown. (*Haliotis conicopora, ranch*).

Made in South Korea from Australian Shells

Code	Description	Size	1-23	24-99	100+
872-16L	Brown MOP Button:16L	0.413"	\$1.64	\$0.38	\$0.27
872-18L	Brown MOP Button:18L	0.457"	\$1.64	\$0.48	\$0.34
872-20L	Brown MOP Button:20L	0.492"	\$1.64	\$0.55	\$0.42

SMOKED SALT WATER (AKOYA) MOTHER OF PEARL SHELL BUTTONS



385-xx (Front)



385-xx (Back)

The smoked akoya Mother of Pearl Shell Buttons have two holes and have been smoked to give them a darker coloring. (*Pinctada fucata, wild*).

Made in South Korea

Code	Description	Size	1-23	24-99	100+
385-20L	Smoked Akoya MOP Button:20L	0.492"	\$1.64	\$0.48	\$0.34
385-24L	Smoked Akoya MOP Button:24L	0.590"	\$1.64	\$0.55	\$0.42
385-36L	Smoked Akoya MOP Button:36L	0.900"	\$1.64	\$0.55	\$0.42
385-40L	Smoked Akoya MOP Button:40L	1.000"	\$1.64	\$0.55	\$0.42
385-44L	Smoked Akoya MOP Button:44L	1.100"	\$1.64	\$0.55	\$0.42

3080-4 Shell Buttons

BLUE MUSSEL “WAMPUM” SHELL BUTTONS



These buttons are made from blue mussel shells. We call them “wampum” buttons. They have two holes. The front and back is shown. (*Mytilus edulis, ranch*).

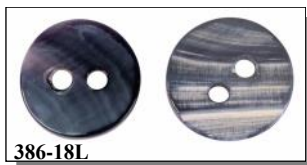
Made in South Korea
from South Korean shells

Code	Description	Size	MM	1-23	24-99	100+
386-18L	Blue Mussel Button:18L	0.457"	11.6mm	\$1.64	\$1.03	\$0.70
386-20L	Blue Mussel Button:20L	0.512"	13mm	\$1.70	\$1.10	\$0.76
386-22L	Blue Mussel Button:22L	0.551"	14mm	\$1.75	\$1.16	\$0.83
386-40L	Blue Mussel Button:40L	1.000"	25mm	\$1.83	\$1.27	\$0.88

BLACK MUSSEL SHELL BUTTONS

These buttons are made from black mussel shells. They have two holes. The front and back is shown. (*Mytilus trossulus, ranch*).

Made in South Korea from South Korean shells



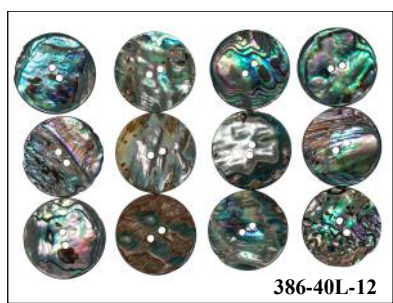
Code	Description	Size	MM	1-23	24-99	100+
1363-14L	Black Mussel Button:14L	0.354"	9mm	\$1.12	\$0.85	\$0.57
1363-16L	Black Mussel Button:16L	0.394"	10mm	\$1.19	\$0.89	\$0.60
1363-20L	Black Mussel Button:20L	0.512"	13mm	\$1.25	\$0.95	\$0.62
1363-22L	Black Mussel Button:22L	0.551"	14mm	\$1.31	\$1.00	\$0.66
1363-24L	Black Mussel Button:24L	0.591"	15mm	\$1.38	\$1.03	\$0.69
1363-28L	Black Mussel Button:28L	0.709"	18mm	\$1.44	\$1.09	\$0.72
1363-32L	Black Mussel Button:32L	0.787"	20mm	\$1.50	\$1.12	\$0.75
1363-36L	Black Mussel Button:36L	0.906"	23mm	\$1.56	\$1.19	\$0.79
1363-40L	Black Mussel Button:40L	1.000"	25mm	\$1.87	\$1.41	\$0.95

BUTTON SIZE CHART

One inch equals 40 lines or 25.4 mm.

Line	Inches	Millimeters
14-line	0.362	9.2 mm
16-line	0.413	10.5 mm
18-line	0.457	11.6 mm
20-line	0.492	12.5 mm
21-line	0.531	13.5 mm
22-line	0.559	14.2 mm
23-line	0.583	14.8 mm
24-line	0.590	15.0 mm
27-line	0.661	16.8 mm
28-line	0.701	17.8 mm
30-line	0.748	19.0 mm
32-line	0.807	20.5 mm
34-line	0.846	21.5 mm
36-line	0.902	22.9 mm
40-line	1.000	25.4 mm

PAUA SHELL BUTTONS



These buttons are made from cut and tumbled paua shells. These buttons are sold in packs of 12. The coloring varies from shell to shell and has an amazing iridescence. (*Halotis iris, wild*).

Made in New Zealand

Code	Description	Size	MM	1-23	24-99	100+
1393-20L-12	Paua Shell Button:20L (12-pack)	0.5"	12.5mm	\$21.41	\$16.47	\$13.18
1393-40L-12	Paua Shell Button:40L (12-pack)	1.0"	25mm	\$81.84	\$62.95	\$50.36

MEXICAN ABALONE SHELL BUTTONS

The abalone shell buttons are made from Mexican green abalone shell. Please expect some variation in colors and patterns from button to button as these are natural products. (*Halotis fulgens, ranch*).

Made in China from Mexican Shells

Code	Description	Size	MM	1-23	24-99	100+
1394-40L	Mexican Green Abalone Button:40L	1.0"	25mm	\$4.34	\$3.34	\$2.67

