

# 3010-1 Deerskin Leather

## GARMENT GRADE DEERSKIN LEATHER



We offer a true high-quality garment grade deerskin leather for making jackets and dresses. The white deer skin is white on the inside, too. This leather is sold by the hide. We do not cut hides; each hide is marked with square footage.

The white tail deer hides are 8 to 13 square feet per hide. Currently available in a variety of colors. (*Odocoileus virginianus*, wild).

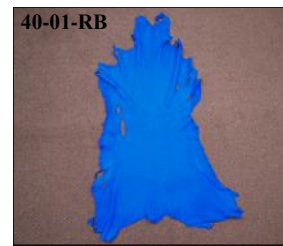
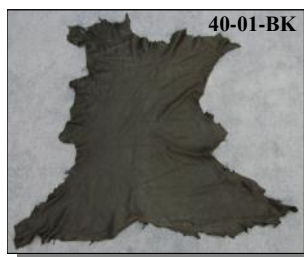
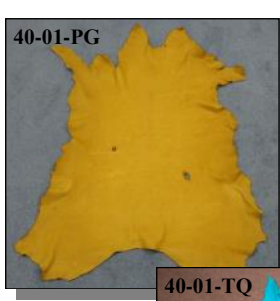
The red deer hides leather are 14½ to 20½ square feet per hide. Currently only available in white. (*Cervus elaphus*, ranch).

White Tail Deer is Product of the USA or Canada  
Red Deer is Product of Canada

| Code         | Description                   | Price per sq ft |
|--------------|-------------------------------|-----------------|
| 40-GAR-BK-AS | Deerskin:Garment:Black        | \$15.81         |
| 40-GAR-CR-AS | Deerskin:Garment:Cream        | \$15.81         |
| 40-GAR-MB-AS | Deerskin:Garment:Medium Brown | \$15.81         |
| 40-GAR-PG-AS | Deerskin:Garment:Prairie Gold | \$15.81         |
| 40-GAR-RD-AS | Deerskin:Garment:Black        | \$15.81         |
| 40-GAR-RB-AS | Deerskin:Garment:Royal Blue   | \$15.81         |
| 40-GAR-SF-AS | Deerskin:Garment:Sea Foam     | \$15.81         |
| 40-GAR-TB-AS | Deerskin:Garment:Tobacco      | \$15.81         |
| 40-GAR-TQ-AS | Deerskin:Garment:Turquoise    | \$15.81         |
| 40-GAR-WH-AS | Deerskin:Garment:White        | \$17.20         |

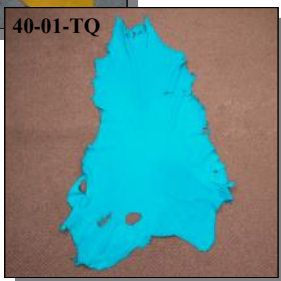
| Code        | Description                | 1-99 sq ft | 100+ sq ft |
|-------------|----------------------------|------------|------------|
| 1200-GAR-WH | Red Deerskin:Garment:White | \$21.67    | \$18.06    |

## #1/#2 GRADE DEERSKIN LEATHER



This is topgrain #1/#2 grade deerskin leather. They are whole hides with some holes, blemishes, and scratches on the leather side. All imperfections are near the side of the skin. (*Odocoileus virginianus*, wild).

Product of the USA



| Code     | Description                         | Price per sq ft |
|----------|-------------------------------------|-----------------|
| 40-01-BK | Deerskin Leather:#1/#2:Black        | \$14.45         |
| 40-01-CR | Deerskin Leather:#1/#2:Cream        | \$14.45         |
| 40-01-DB | Deerskin Leather:#1/#2:Dark Brown   | \$14.45         |
| 40-01-MB | Deerskin Leather:#1/#2:Med Brown    | \$14.45         |
| 40-01-PG | Deerskin Leather:#1/#2:Prairie Gold | \$14.45         |
| 40-01-RB | Deerskin Leather:#1/#2:Royal Blue   | \$14.45         |
| 40-01-SD | Deerskin Leather:#1/#2:Saddle Tan   | \$14.45         |
| 40-01-SF | Deerskin Leather:#1/#2:Sea Foam     | \$14.45         |
| 40-01-TQ | Deerskin Leather:#1/#2:Turquoise    | \$14.45         |
| 40-01-WH | Deerskin Leather:#1/#2:White        | \$15.89         |

## CRAFT GRADE DEERSKIN LEATHER

The Deerskin Leather is sold by the hide. The hides average about 8 to 10 square feet but may range in size from 5 to 17 square feet. Each hide has been machine-measured and has the size marked. These are good craft-grade skins in 3- to 3½-ounce weight. Expect some holes or imperfections. This is the same leather we use to make the deerskin bags. Please let us know what size hides you prefer and we will do our best to meet your requirements. Color availability varies. (*Odocoileus virginianus*, wild).



Product of Canada or the USA

| Code        | Description                               | Price per sq ft |
|-------------|---|-----------------|
| 40-02-BK-AS | Deerskin Leather:Craft Grade:Black        | \$ 9.02         |
| 40-02-BR-AS | Deerskin Leather:Craft Grade:Brown        | \$ 9.02         |
| 40-02-CR-AS | Deerskin Leather:Craft:Cream              | \$ 9.02         |
| 40-02-DB-AS | Deerskin Leather:Craft:Dark Brown         | \$ 9.02         |
| 40-02-GD-AS | Deerskin Leather:Craft:Gold               | \$ 9.02         |
| 40-02-MB-AS | Deerskin Leather:Craft:Medium Brown       | \$ 9.02         |
| 40-02-PA-AS | Deerskin Leather:Craft:Palomino           | \$ 9.02         |
| 40-02-PG-AS | Deerskin Leather:Craft Grade:Prairie Gold | \$ 9.02         |
| 40-02-RB-AS | Deerskin Leather:Craft Grade:Royal Blue   | \$ 9.02         |
| 40-02-RD-AS | Deerskin Leather:Craft Grade:Red          | \$ 9.02         |
| 40-02-SD-AS | Deerskin Leather:Craft Grade:Saddle Tan   | \$ 9.02         |
| 40-02-SF-AS | Deerskin Leather:Craft Grade:Sea Foam     | \$ 9.02         |
| 40-02-TA-AS | Deerskin Leather:Craft Grade:Brown Gold   | \$ 9.02         |
| 40-02-TQ-AS | Deerskin Leather:Craft Grade:Turquoise    | \$ 9.02         |
| 40-02-WH-AS | Deerskin Leather:Craft Grade:White        | \$15.51         |

# 3010-2 Deersplit Leather

## GARMENT DEERSPLIT LEATHER

The Garment Grade Deersplit Leather is sold by the piece and priced by the square foot. These are larger pieces that are leveled and easy to cut large pieces from. (*Odocoileus virginianus*, wild).

Product of the USA

| Code       | Description                          | Price per sq ft |
|------------|--------------------------------------|-----------------|
| 163-GAR-SW | Deersplit Leather:Garment:Snow White | \$5.83          |

163-GAR-SW



163-12-SW

## #1/#2 DEERSPLIT LEATHER

The #1/#2 Grade Deersplit Leather is sold by the piece and priced by the square foot. The pieces average 6 to 9 square feet and are leveled and easy to work with. (*Odocoileus virginianus*, wild).

Product of the USA

| Code         | Description                        | Price per sq ft |
|--------------|------------------------------------|-----------------|
| 163-12-SW-AS | Deersplit Leather:#1/#2:Snow White | \$5.06          |

## REVERSE DEER LEATHER

This is 2.5 to 3 ounce prairie gold reverse deer leather sold by the square foot. Reverse leather is bad grain (lots of damage, stains, on the hide side, etc.), with a good suede side. This is caused by poor salting/preservation of the hide or letting it sit too long before tanning. (*Odocoileus virginianus*, wild).

Product of Canada



163-RV-PG2-AS

| Code          | Description                   | 1-99 sq ft | 100+ sq ft |
|---------------|-------------------------------|------------|------------|
| 163-RV-PG2-AS | Reverse Deer Leather:Pr. Gold | \$4.03     | \$3.23     |

## CRAFT DEERSPLIT LEATHER BUNDLES — SMALL & LIGHTWEIGHT PIECES

163-12-PG-AS



Each bundle consists of small and/or lightweight pieces (1 to 1½ ounce) measuring 1 to 3 square feet each. For the most part, the skins are clean, but some holes may be present. This is the same leather we use to make our deersplit medicine bags. The bundles have been measured by machine and are marked, but the skins are not individually marked. Available only in full bundles of approximately 100 square feet. (*Odocoileus virginianus*, wild).

Product of Canada or the USA

| Code         | Description                           | Price per sq ft |
|--------------|---------------------------------------|-----------------|
| 163-12-PG-AS | Deersplit Leather Bundle:Prairie Gold | \$5.06          |

## DEERSKIN SPLIT LEATHER

163-20-L01



This lot of leather is medium-weight deersplit in a gold color. The pieces range between 2 to 4 square feet. This is a decent grade and is ideal for craft projects. You can order by the pound. Individual pieces are not marked with size measurements. (*Odocoileus virginianus*, wild).

Product of the USA

| Code       | Description                        | Price per pound |
|------------|------------------------------------|-----------------|
| 163-20-L01 | Deerskin Split Leather:3 oz.:Lot 1 | \$10.83         |

# 3010-3 Leather

## BUFFALO LEATHER



The top grain tannery run buffalo leather is sold by the hide. Each hide is marked with its size. They are 17 to over 30 sq. ft. Tannery run skins are a mix of grades. They are not flawless, but are not junk either. Expect some holes and/or flaws. (*Bison bison, ranch*).

Product of the USA



| Code        | Description  | 1-99 sq ft | 100+ sq ft |
|-------------|--|------------|------------|
| 334-TR-BK3  | Buffalo Leather:Tannery Run:Black:3-3.5 oz.          | \$14.45    | \$13.00    |
| 334-TR-TB3  | Buffalo Leather:Tannery Run:Tobacco:3-3.5 oz.        | \$13.72    | \$12.30    |
| 334-TR-SD4  | Buffalo Leather:Tannery Run:Saddle Tan:4-5 oz.       | \$15.89    | \$14.45    |
| 334-TR-4    | Buffalo Leather:Tannery Run:Natural:4-5 oz.          | \$15.89    | \$14.45    |
| 334-TR-WH5  | Buffalo Leather:Tannery Run:White:5 oz.              | \$18.06    | \$16.60    |
| 334-TR1-PG3 | Buffalo Leather:Tannery Run 1:Prairie Gold:3-3.5 oz. | \$12.63    | \$11.20    |

## CALF LEATHER

Our garment grade calf leather is of top quality, and our #1/#2 grade has a nice quality with minor flaws and holes. They come in a nice white color, a result of a special tanning process. These are not bleached.

We also carry veg tan calf leather, which averages 7.5 square feet. Supple and durable, it is ideal for craft making. (*Bos taurus, ranch*).

Product of USA



| Code       | Description                             | 1-99 sq ft | 100+ sq ft |
|------------|---|------------|------------|
| 189-GAR-WH | Calf Leather:Garment:White              | \$11.20    | \$ 9.74    |
| 189-12-WH  | Cal Leather:#1/#2:White                 | \$10.83    | \$ 9.39    |
| 1306-UT-NA | Veg Tan Calf Leather:Ultra Thin:Natural | \$14.36    | \$12.93    |



Saddle Tan, Smoke, Gold

## ELK LEATHER



This elk topgrain leather is available in various grades and colors. The hides average around 23 to 25 square fee, but may be larger or smaller. (*Cervus elaphus, wild*).

Product of the USA

| Code     | Description                 | 1-99 sq ft | 100+ sq ft |
|----------|-----------------------------|------------|------------|
| 421-1-PG | Elk Leather:#1:Prairie Gold | \$11.49    | \$10.05    |
| 421-1-SD | Elk Leather:#1:Saddle Tan   | \$11.49    | \$10.05    |
| 421-1-SM | Elk Leather:#1:Smoke        | \$11.49    | \$10.05    |
| 421-1-TB | Elk Leather:#1:Tobacco      | \$11.49    | \$10.05    |
| 421-2-PG | Elk Leather:#2:Prairie Gold | \$11.49    | \$10.05    |
| 421-2-PL | Elk Leather:#2:Pearl        | \$10.05    | \$ 8.60    |
| 421-2-SD | Elk Leather:#2:Saddle Tan   | \$10.05    | \$ 8.60    |
| 421-2-SM | Elk Leather:#2:Smoke        | \$10.05    | \$ 8.60    |
| 421-3-PG | Elk Leather:#3:Prairie Gold | \$ 8.60    | \$ 7.14    |
| 421-3-SD | Elk Leather:#3:Saddle Tan   | \$ 8.60    | \$ 7.14    |
| 421-3-SM | Elk Leather:#3:Smoke        | \$ 8.60    | \$ 7.14    |



# 3010-4 Leather

## COW HANDBAG LEATHER

This 2 to 3 oz. cow leather ranges in size from 7 to 17 square feet and averages 14 to 15 square feet. The pieces are irregularly shaped and ideal for making handbags and other small craft projects. Please see our retail website for colors available. (*Bos Taurus, ranch*).

Product of the USA and Italy



| Code       | Description                        | Price per sq ft |
|------------|------------------------------------|-----------------|
| 189-23-Gxx | Cow Leather:2-3 oz.:Various colors | \$6.12          |

## CRAFT COW SPLIT LEATHER



The cow split leather is sold by the piece. Each shoulder piece is around three to six square feet and are marked for size. One 4.5 sq. ft. piece measured 28" long by 22" wide down the middle. The shapes and sizes vary. You will be charged only for what you get. (*Bos taurus, ranch*).

Product of Canada

| Code          | Description                               | 1-99 sq ft | 100+ sq ft |
|---------------|---|------------|------------|
| 1274-CRSH-GD3 | Cow Split Leather:Shoulder: Gold:3-3.5 oz | \$2.61     | \$1.64     |

## AUTOMOTIVE UPHOLSTERY LEATHER

This is high quality cow skin upholstery leather for automobiles. The leather is sold by the hide. Hides are about 30 to 45 sq. ft. We will not cut the hides into smaller pieces. (*Bos taurus, ranch*).

Product of the South Africa



| Code    | Description                            | Price sq. ft. |
|---------|--|---------------|
| 1271-10 | Automotive Upholstery Leather:Black    | \$14.45       |
| 1271-20 | Automotive Upholstery Leather:Charcoal | \$14.45       |
| 1271-30 | Automotive Upholstery Leather:Gray     | \$14.45       |
| 1271-40 | Automotive Upholstery Leather:Beige    | \$14.45       |

## DEERTANNED COW LEATHER



This is cow leather that has been tanned to be soft like deer leather. These are bigger, cleaner pieces with fewer flaws than real deerskin. Each hide is marked with its total square footage. They range in size from 18 to 36 sq. ft. We can usually select either smaller or larger pieces according to your wishes. We will not, however, cut hides to specific dimensions. (*Bos taurus, ranch*).

Product of Canada

| Code        | Description                            | 1-99 sq. ft. | 100+ sq. ft. |
|-------------|--|--------------|--------------|
| 1215-20-CR2 | Deertanned Cow Leather:Cream:2-2.5 oz. | \$10.19      | \$8.14       |
| 1215-20-CR3 | Deertanned Cow Leather:Cream:3-3.5 oz. | \$10.83      | \$9.42       |
| 1215-20-PG2 | Deertanned Cow Leather:Gold:2-2.5 oz.  | \$11.20      | \$9.74       |
| 1215-20-PG5 | Deertanned Cow Leather:Gold:5-5.5 oz.  | \$11.68      | \$9.35       |

# 3010-5 Leather

## GOAT LEATHER

Product of Haiti  
Saddle Tan is  
Product of Egypt



This topgrain goat leather is available in four colors. The AB grade is typically free of defects or has very minor scratches. These are pretty clean goat leather hides for the most part. Some may have minor imperfections. They are about 0.6 to 0.8 mm (1.5 to 2.0 oz) or 0.8 to 1.0 mm (2.0 to 2.5 oz) thick. They typically range in size from 3 to 6 sq. ft. (*Capra hircus, ranch*).

| Code      | Description                   | 1-99 sq. ft. | 100+ sq. ft. |
|-----------|-------------------------------|--------------|--------------|
| 398-AB-BK | Goat Leather:A/B:Black        | \$8.67       | \$7.22       |
| 398-AB-CR | Goat Leather:A/B:Cream        | \$8.32       | \$6.87       |
| 398-AB-GD | Goat Leather:A/B:Gold         | \$5.43       | \$3.97       |
| 398-AB-PL | Goat Leather:A/B:Pearl        | \$8.32       | \$6.87       |
| 398-AB-SD | Goat Leather:A/B:Saddle Tan   | \$6.12       | \$4.69       |
| 398-TR-WH | Goat Leather:TanneryRun:White | \$7.95       | \$6.51       |

## DISTRESSED GOAT LEATHER

These goat leather hides are of good quality. The full-grain leather hides are neither sanded nor buffed, while the pull-up leather hides underwent buffing to achieve their distressed look.

Distressed leather are treated to look aged or worn out without losing its overall integrity. (*Capra hircus, ranch*).

Product of USA

Pull-up leather are treated to have a natural appearance which lightens in color when stretched during wear to produce a unique worn-in effect with time. This kind of aniline leather is deeply impregnated with oils and waxes, so when the leather is bent or pulled, the oils move around within the skin, causing lighter tones and interesting colors to become visible.



| Code          | Description                                    | 1-99 sq ft | 100+ sq ft |
|---------------|--|------------|------------|
| 398-DFG-NA-AS | Distressed Goat Leather Full Grain:Natural     | \$11.56    | \$10.11    |
| 398-DPB-NA-AS | Distressed Goat Leather Pull-up:Buffed:Natural | \$10.83    | \$9.39     |

## HORSE LEATHER



This tannery-run grade horse leather is available in cream color only at this time. The weight is 3 to 3½ oz. and the size ranges from 13 to 17 square feet. (*Equus caballus, ranch*).

Product of Canada or the USA

| Code       | Description         | Price per sq ft |
|------------|---------------------|-----------------|
| 1106-CR-AS | Horse Leather:Cream | \$17.33         |

## HORSE BUTT LEATHER AND STRIPS



The horse butt leather is polished with no coating. Each hide is marked with its total square footage. They range in size from 1¼ to 5¼ sq. ft. They are light weight and suitable for making gloves. (*Equus caballus, ranch*).

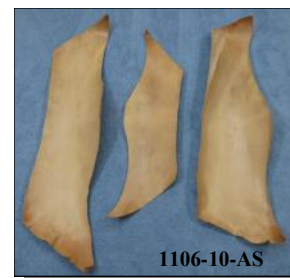
Product of Canada

| Code        | Description                    | Price per sq. ft. |
|-------------|--------------------------------|-------------------|
| 1106-20-BK3 | Horse Butt Leather:Black:3 oz. | \$7.22            |

The Horse Leather Butt Strips are ~7 oz. veg tan natural pieces. They are approximately 40" to 45" long and 8" to 11" wide. They are ideal for making knife cases and holsters. Price is per strip. (*Equus caballus, ranch*).

Product of the USA

| Code       | Description              | Price per strip |
|------------|--------------------------|-----------------|
| 1106-10-AS | Horse Leather Butt Strip | \$72.88         |



# 3010-6 Leather

## #1 MOOSE LEATHER



The moose leather hides are available only in quarters or sides, not full hides. The cork quarter hides range in size from 5½ to 7¾ sq. ft. The cork sides range in size from 15 to 18¾ sq. ft. The gold cream quarters range in size from 5½ to 7 sq. ft. The gold cream sides range in size from 12¾ to 15 sq. ft. Thickness is about 4 to 5 ounce. (*Alces alces, wild*).

Product of Canada



## #2 & REJECT MOOSE LEATHER

The #2 moose leather averages 10 sq. ft. Each hide is marked with its size. We can usually select small, medium, or large hides according to your wishes. However, we will not cut hides to measure. Expect some holes and/or flaws. (*Alces alces, wild*).

Product of Canada



| Code      | Description                             | Price per sq ft |
|-----------|---|-----------------|
| 164-1Q-DC | Moose Leather:#1:Quarter:Dark Chocolate | \$17.33         |
| 164-1Q-CK | Moose Leather:#1:Quarter:Cork           | \$17.33         |
| 164-1Q-GC | Moose Leather:#1:Quarter:Gold Cream     | \$17.33         |
| 164-1S-DC | Moose Leather:#1:Side:Dark Chocolate    | \$17.33         |
| 164-1S-CK | Moose Leather:#1:Side:Cork              | \$17.33         |
| 164-1S-GC | Moose Leather:#1:Side:Gold Cream        | \$17.33         |

| Code      | Description                         | Price per sq ft |
|-----------|-------------------------------------|-----------------|
| 164-2-BLK | Topgrain Moose Leather:#2:Black     | \$11.90         |
| 164-2-TOB | Topgrain Moose Leather:#2:Tobacco   | \$11.90         |
| 164-RJ    | Topgrain Moose Leather:Reject:Cream | \$ 8.60         |

## TANNERY RUN MOOSE LEATHER



The tannery run moose leather is a mix of grades. The 3 to 3½ oz. black moose leather hides range in size from 3¾ to 11¼ sq. ft. The 5 to 5½ oz. black moose leather hides range in size from 16½ to 24½ sq. ft. The prairie gold moose leather range in size from 11¼ to 22¼ sq. ft. Please let us know if you need a smaller or larger hide and we will try to find the closest size for you. (*Alces alces, wild*).

Product of Canada

| Code       | Description                                | Price per sq ft |
|------------|--|-----------------|
| 164-TR-BK3 | Moose Leather:TR:Black:3 to 3.5 oz.        | \$12.30         |
| 164-TR-BK5 | Moose Leather:TR:Black:5 to 5.5 oz.        | \$13.36         |
| 164-TR-PG3 | Moose Leather:TR:Prairie Gold:3 to 3.5 oz. | \$11.56         |
| 164-TR-PG5 | Moose Leather:TR:Prairie Gold:5 to 5.5 oz. | \$12.30         |

## KUDU LEATHER

The kudu leather is sold by the hide. The size of each hide is measured by machine. Please see the gallery on the website for individual pieces available for sale. (*Tragelaphus strepsiceros, wild*).

Product of Namibia



| Code           | Description          | Price       |
|----------------|----------------------|-------------|
| 1211-10-CG-Gxx | Kudu Leather:Cognac  | See Website |
| 1211-10-OX-Gxx | Kudu Leather:Oxblood | See Website |
| 1211-10-RU-Gxx | Kudu Leather:Rust    | See Website |



# 3010-7 Leather

## PIG SUEDE LEATHER



This tannery-run pig suede leather is ideal for wrapping dreamcatchers and other craft projects. Hides range from 6 to 16 square feet. (*Sus scrofa domestica*, ranch).

Product of China

| Code        | Description                              | Price per sq ft |
|-------------|--|-----------------|
| 296-1-BK-AS | Pig Suede Leather:Tannery Run:Black      | \$7.95          |
| 296-1-CH-AS | Pig Suede Leather:Tannery Run:Charcoal   | \$7.95          |
| 296-1-CR-AS | Pig Suede Leather:Tannery Run:Coral      | \$7.95          |
| 296-1-DB-AS | Pig Suede Leather:Tannery Run:Dark Brown | \$7.95          |
| 296-1-DN-AS | Pig Suede Leather:Tannery Run:Denim      | \$7.95          |
| 296-1-GR-AS | Pig Suede Leather:Tannery Run:Green      | \$7.95          |
| 296-1-MC-AS | Pig Suede Leather:Tannery Run:Mocha      | \$7.95          |
| 296-1-MV-AS | Pig Suede Leather:Tannery Run:Mauve      | \$7.95          |
| 296-1-NV-AS | Pig Suede Leather:Tannery Run:Navy       | \$7.95          |
| 296-1-RD-AS | Pig Suede Leather:Tannery Run:Red        | \$7.95          |
| 296-1-RU-AS | Pig Suede Leather:Tannery Run:Rust       | \$7.95          |
| 296-1-SM-AS | Pig Suede Leather:Tannery Run:Salmon     | \$7.95          |
| 296-1-TP-AS | Pig Suede Leather:Tannery Run:Taupe      | \$7.95          |
| 296-1-WH-AS | Pig Suede Leather:Tannery Run:White      | \$7.95          |

## WOODLAND PIG LEATHER

Our full-grain woodland pig leather hides are of good quality, and has color variation and natural marks characteristic of distressed leather, treated to look aged or worn out without losing its overall integrity. It will darken with use and develop a rich patina over time. They are approximately 2 to 4 oz.

We also have scrap leather sold by the pound. (*Sus scrofa*, ranch).

Product of USA



| Code           | Description  | 1-99 sq ft   | 100+ sq ft |
|----------------|--|--------------|------------|
| 296-DW-NASQFT  | Woodland Pig Leather:Distressed                    | \$11.56      | \$10.11    |
| Code           | Description  | Price per lb |            |
| 296-DW-NALB-AS | Woodland Distressed Pig Leather:Natural:Scrap (lb) | \$50.55      |            |

## REINDEER LEATHER



This is topgrain #1 grade light weight reindeer leather. The leather is sold by the hide. The hides average 12 square feet and are 1 to 2-ounce weight leather. (*Rangifer tarandus*, ranch).

Product of Finland

| Code     | Description                   | Price per sq ft |
|----------|-------------------------------|-----------------|
| 472-4207 | Reindeer Leather:#1:Chocolate | \$17.33         |

## SHEEP LEATHER

Product of Canada, Egypt, or the USA



We have erratic supplies of craft grade sheepskin leather that range in size from 7 to 10 square feet. This looks like deer and is ideal for small crafts. It has a slightly spongy feel to it. Many craftspeople like it because it is easier to push a needle through than deer. Expect some holes or flaws. (*Ovis aries*, ranch).



| Code      | Description                   | 1-99 sq ft | 100+ sq ft |
|-----------|-------------------------------|------------|------------|
| 588-20-BK | Sheep Leather:Black:2-2.5 oz. | \$6.28     | \$5.71     |
| 588-20-WH | Sheep Leather:White:3-4 oz.   | \$4.69     | \$4.26     |

# 3010-X Leather

## GLAZED CARP LEATHER

870-4G-02A



870-4G-02C



870-4G-03



870-4G-04



870-4G-05



870-4G-06



870-4G-11



870-4G-13



870-4G-14B



870-4G-24



870-4G-26



870-4G-26A



870-4G-28



870-4G-30



870-4G-42



These are dyed crucian carp skins. The tanned carp skins have a glazed finish and are soft and pliable. They have a distinctive fish scale pattern, which makes them look unique from other leathers. The skins measured down the middle are approximately 16 to 21 inches long by 3½ to 4½ inches wide. Glazing adds a protectant to the outside surface of the leather. The glazed leather surface will be water-resistant and protect against dirt, grease, and excessive wear. (*Carassius carassius, ranch*).

Product of the USA, Tanned in Canada

These are dyed crucian carp skins. The tanned carp skins have a suede finish and are soft and pliable. They have a distinctive fish scale pattern, which makes them look unique from other leathers. The skins measured down the middle are approximately 16 to 21 inches long by 3½ to 4½ inches wide. (*Carassius carassius, ranch*).

Product of the USA, Tanned in Canada

| Code       | Description                          | Price   |
|------------|--------------------------------------|---------|
| 870-4G-02A | Glazed Carp Leather:Medium Chocolate | \$13.50 |
| 870-4G-02C | Glazed Carp Leather:Dark Brown       | \$13.50 |
| 870-4G-03  | Glazed Carp Leather:Sea Urchin       | \$13.50 |
| 870-4G-04  | Glazed Carp Leather:Black            | \$13.50 |
| 870-4G-05  | Glazed Carp Leather:Jaguar Green     | \$13.50 |
| 870-4G-06  | Glazed Carp Leather:Scarlet          | \$13.50 |
| 870-4G-11  | Glazed Carp Leather:Sunrise          | \$13.50 |
| 870-4G-13  | Glazed Carp Leather:Mermaid Green    | \$13.50 |
| 870-4G-14B | Glazed Carp Leather:Dark Gray        | \$13.50 |
| 870-4G-24  | Glazed Carp Leather:Seafoam          | \$13.50 |
| 870-4G-26  | Glazed Carp Leather:Pink Mauve       | \$13.50 |
| 870-4G-26A | Glazed Carp Leather:Dark Mauve       | \$13.50 |
| 870-4G-28  | Glazed Carp Leather:Deep Blue Lagoon | \$13.50 |
| 870-4G-30  | Glazed Carp Leather:White            | \$13.50 |
| 870-4G-42  | Glazed Carp Leather:Purple           | \$13.50 |

## SUEDE CARP LEATHER

870-4S-02



870-4S-03



870-4S-04



870-4S-07



870-4S-08



870-4S-10



870-4S-11



870-4S-13



870-4S-16



870-4S-19



870-4S-20



870-4S-30



870-4S-31



870-4S-42



870-4S-49



| Code       | Description                           | Price  |
|------------|---------------------------------------|--------|
| 870-4S-02  | Suede Carp Leather:Light Chocolate    | \$6.75 |
| 870-4S-02A | Suede Carp Leather:Medium Chocolate   | \$6.75 |
| 870-4S-02B | Suede Carp Leather:Medium Brown       | \$6.75 |
| 870-4S-03  | Suede Carp Leather:Sea Urchin         | \$6.75 |
| 870-4S-04  | Suede Carp Leather:Black              | \$6.75 |
| 870-4S-07  | Suede Carp Leather:Demerara           | \$6.75 |
| 870-4S-07A | Suede Carp Leather:Dark Demerara      | \$6.75 |
| 870-4S-08  | Suede Carp Leather:Seaweed            | \$6.75 |
| 870-4S-10  | Suede Carp Leather:Magenta            | \$6.75 |
| 870-4S-11  | Suede Carp Leather:Sunrise            | \$6.75 |
| 870-4S-13  | Suede Carp Leather:Mermaid Green      | \$6.75 |
| 870-4S-14A | Suede Carp Leather:Gray               | \$6.75 |
| 870-4S-14C | Suede Carp Leather:Off-Gray           | \$6.75 |
| 870-4S-15  | Suede Carp Leather:Coral              | \$6.75 |
| 870-4S-16  | Suede Carp Leather:Royal Blue         | \$6.75 |
| 870-4S-19  | Suede Carp Leather:Faded Blue Denim   | \$6.75 |
| 870-4S-20  | Suede Carp Leather:Light Driftwood    | \$6.75 |
| 870-4S-20A | Suede Carp Leather:Dark Driftwood     | \$6.75 |
| 870-4S-21  | Suede Carp Leather:Shrimp Cocktail    | \$6.75 |
| 870-4S-22  | Suede Carp Leather:Sahara             | \$6.75 |
| 870-4S-27  | Suede Carp Leather:Goldfish           | \$6.75 |
| 870-4S-28  | Suede Carp Leather:Deep Blue Lagoon   | \$6.75 |
| 870-4S-30  | Suede Carp Leather:White              | \$6.75 |
| 870-4S-31  | Suede Carp Leather:Ebony Mist         | \$6.75 |
| 870-4S-32  | Suede Carp Leather:Light Brown/Gray   | \$6.75 |
| 870-4S-42  | Suede Carp Leather:Purple             | \$6.75 |
| 870-4S-46  | Suede Carp Leather:Mediterranean Blue | \$6.75 |
| 870-4S-49  | Suede Carp Leather:Very Light Green   | \$6.75 |
| 870-4S-52  | Suede Carp Leather:Lavender           | \$6.75 |
| 870-4S-53  | Suede Carp Leather:Rose               | \$6.75 |